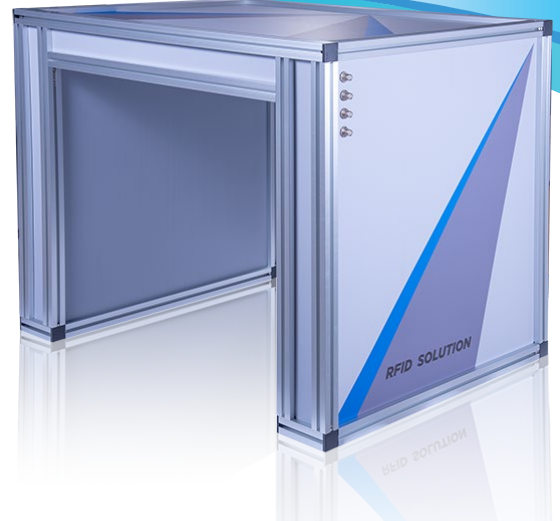


RFID Tunnel

High performance asset tracking solution

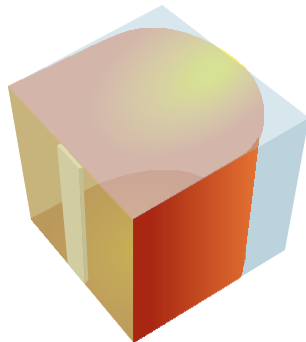
The RFID Tunnel is specifically designed for use in asset tracking. Each tunnel includes four WAVE® antennas. This is an easy to install, plug-and-play system that uses multiple beams to locate and read large numbers of tags simultaneously.



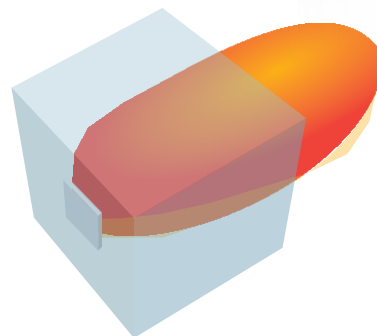
WAVE® Antenna

vs.

Patch Antenna



A WAVE® antenna creates a cylindrical radiation pattern like a fluorescent tube.



A patch antenna produces one main beam and behaves like a flashlight, radiating in a conical pattern well beyond the optimal RFID zone.

Key Features

Versatility

The RFID Tunnel can read large numbers of densely packed RFID tags on moving conveyors, making it suitable for applications in the apparel and cosmetics industries as well as retail store and production line management.

Accuracy

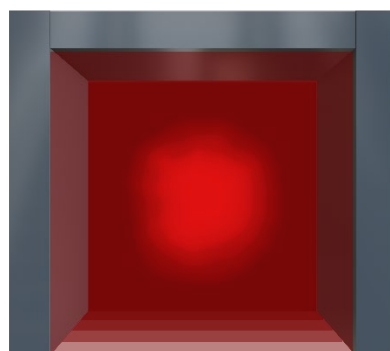
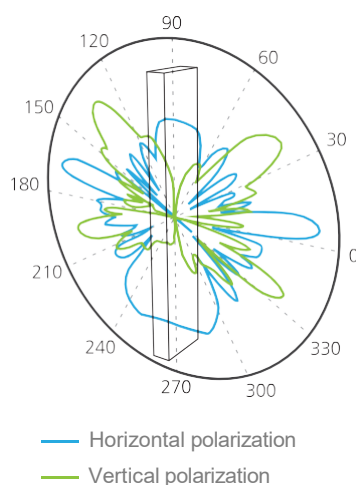
The WAVE® antennas in this solution have a patented multi-beam illumination pattern that delivers 99+% tag read rates within an optimal user-defined read zone while minimizing extraneous tag reads from outside the zone.

Efficiency

This is a plug-and-play system that can be easily installed in a wide variety of locations with minimal adjustment. It can also be deployed as a retrofit for existing fixtures, delivering a positive ROI within months.

Antenna Radiation Pattern

WAVE® antennas are designed to uniformly illuminate a volume of space. When installed in pairs, the antennas complement each other and provide spatial, direction-of-arrival, and polarization diversities throughout the volume.



RFID Tunnel 3D Pattern



Specifications

Model Name	XRBS-T3
Antenna Port	4 ports
Weight	14 kg
Ambient Operating Temperature	-20 °C to 60 °C (-4 °F to 140 °F)
Frequency Range	902 MHz–928 MHz
Dimensions	Exterior: 81 cm (L) × 60.8 cm (W) × 66 cm (H) Interior: 60 cm (L) × 60.8 cm (W) × 55.5 cm (H)
Gain	5.5 dBi
Impedance	50 Ω
Polarization	Multi-linear
Maximum Input Power	10 W
Beamwidth	360°
Connector	TNC reverse polarity



www.wnc.com.tw

WNC Corporation

20 Park Ave. II, Hsinchu Science Park,
Hsinchu 300, Taiwan
Fax: +886 3 666 7799

Sales Contact:

E-mail: SVS.Sales@wnc.com.tw